



TROPICAL SHIPPING & BORINKEN MARINE GROUP

Borinken Marine Group and Tropical Shipping have officially renewed their "Ship Services Agreement. p. 02



ANCHORED IN EXCELLENCE

Francis Vázquez, Port Captain, continues to exemplify leadership and dedication in his role. His commitment to safety and operational excellence is an integral part of maintaining the highest standards in port operations. p. 05-06



EL LOBO GRANDE II & NE'ENA...

El Lobo Grande is back in action, resuming its vital role in operations, while Ne'ena undergoes a transformation to enhance its functionality and appearance. Both milestones highlight our commitment to improving fleet capabilities and service excellence. p. 03-04

HELM IMPLEMENTATION AT BMG:

Enhancing Operational Efficiency

The implementation of the HELM system marks a significant leap in streamlining port management processes. This advanced technology is set to enhance operational efficiency and safety, benefiting both our teams and clients.

CONTINUE - P. 02





In the photo, from left to right: Frances L. González, Operational Support; Víctor F. Iglesias, IT Manager; Captain Raúl Iglesias, Planning & Strategy Director; Daniel Rodríguez, Compliance Manager & Jennifer M. Iglesias, Compliance Assistant.

BORINKEN MARINE GROUP AND TROPICAL SHIPPING

Renew Ship Services Agreement

Borinken Marine Group-BMG, and Tropical Shipping have officially renewed their "Ship Services Agreement."

This renewed partnership marks a continued commitment to enhancing maritime logistics services and reinforcing the longstanding collaboration between both companies. 



HELM CONNECT

Enhancing Operational Efficiency

BMG is proud to announce the implementation of **HELM - Harbor Electronic Logistics Management**, a cutting-edge maritime software designed to enhance operational efficiency and improve fleet management. This initiative represents a significant step forward in modernizing our processes and ensuring seamless operations across our vessels.

In mid-March, we began the initial phase of **HELM** integration with one of our tugboats, Lobo Grande II. This implementation is the result of dedicated efforts by a specially appointed team working under the direction of Captain Raúl Iglesias. The project lead is Jennifer Marie Iglesias, Compliance Assistant; supported by a committed group of professionals: Víctor Iglesias, IT Manager; Daniel Rodríguez, Compliance Manager; and Frances L. González Daumont, Operational Support.

HELM Connect platform will provide BMG with a centralized system to manage essential aspects of our operations, including scheduling, maintenance tracking, and compliance reporting. By automating these processes, we aim to reduce manual workload, minimize errors, and improve overall performance. We are confident that this strategic move will strengthen BMG's capabilities, ensuring our continued success in the maritime industry. We look forward to expanding the use of **HELM** across our entire fleet in the coming months.

Stay tuned for updates as we continue to implement **HELM** and witness the positive impact it will bring to our operations.

EL LOBO GRANDE II: BACK IN ACTION, WHILE NE'ENA UNDERGOES A MAKEOVER

Our powerful tugboat El Lobo Grande II recently underwent minor repairs to the steering room. During this process, we also performed a mechanical cleaning and applied fresh paint to enhance the area. With these improvements completed, the vessel is now ready to resume petroleum transportation operations, reaffirming its commitment to efficiency and safety on every voyage.

Meanwhile, the barge NE'ENA has begun its Special Survey, a comprehensive inspection procedure required by international regulations to ensure the vessel's safety and optimal performance. This process, conducted every five years, is expected to take approximately 30 to 45 days in dry dock. During this period, detailed inspections, preventive maintenance, and potential repairs will be carried out to ensure the vessel's long-term operability.

Both vessels are key assets in our fleet, significantly contributing to petroleum transportation operations. We remain dedicated to maintaining our equipment in optimal condition to provide safe and efficient service to our clients.



*Photos: El Lobo Grande II
Next page: Ne'ena*





*Both vessels are
key assets in our
fleet*



Photos: Ne'ena



ANCHORED IN EXCELLENCE

FRANCIS VAZQUEZ: “A Glimpse into the Role of a Port Captain”

In this edition of the *BMG Newsletter*, we have the privilege of interviewing **Francis Vázquez, Port Captain**, to gain insight into his role and the critical responsibilities he manages in ensuring the smooth and safe operation of port activities. With years of experience in the maritime industry, **Francis** shares his perspective on the challenges and innovations shaping the future of port operations in Puerto Rico and beyond.

-Francis, could you share a bit about your professional background and how you became a Port Captain?

I started my career studying in Sea School where I obtained my Masters 100tons license and then went to the maritime industry as a Third Mate Unlimited license deck officer after completing my training at Texas A & M Maritime Academy in Galveston. Over the years, I worked my way up through various roles aboard some vessels. My experience in navigating, managing vessel operations, and understanding maritime regulations gave me a solid foundation. I transitioned into port operations after a time, and my passion for overseeing the efficient and safe operation of vessels and ports led me to my current role as Port Captain. It's been a rewarding journey that combines my technical knowledge with leadership and operational oversight.

-What are the main responsibilities and daily tasks in your role as Port Captain?

As Port Captain, I oversee the day-to-day operations of the vessels, ensuring everything runs smoothly and safely. This includes coordinating vessel arrivals and departures with the Agency Manager, communicating with the Engineering Department, Port Authorities, scheduling USCG and class inspections with the Compliance Manager, managing crew with Crewing Department, and ensuring compliance with safety and environmental standards. On a daily basis, I monitor vessel activities, update or modify fire plans, troubleshoot any issues, and make real time decisions to keep operations running without disruptions.

-What are the biggest challenges and rewards in your position?

One of the biggest challenges is managing the ever changing dynamics of the operations, especially when dealing with adverse weather conditions or unexpected delays that makes it difficult for us to coordinate future jobs.



Coordinating between different teams, vessels, and authorities can also be very complex. However, seeing a vessel safely docked and knowing that we can complete all the work as planned is incredibly rewarding, many times we spend a good amount of hours on them. Another highlight is the opportunity to work with such a diverse group of professionals and contribute to the growth of the maritime industry.

-How do you ensure safety and efficiency in port operations, and how do you coordinate with different teams and port authorities?

Safety is always the top priority in our industry. I ensure that all port and vessel personnel are trained in safety protocols. We regularly conduct drills on all vessels and keep proper logs. Efficiency comes from clear communication and well established plans. If we complete the work in the time framed schedule, that is a successful day and rewarding. I maintain close coordination with various teams, including dock workers, vessel crew, masters, Engineering Department, Crewing, Agency and office administration. I also work closely with authorities to ensure that we comply with all regulations. Regular meetings and updates help ensure everyone is on the same page and that operations remain efficient.

-Have there been any recent innovations in port operations that you find noteworthy?

For me one innovation that's making a big impact is the integration of digital technologies is to have real time tracking for vessels. Also, the new satellite systems that are playing a big role in the maritime industry. Now we can

Continue P. 06



From P. 05

ANCHORED IN EXCELLENCE

FRANCIS VAZQUEZ:

"A Glimpse into the Role of a Port Captain"

always have communication with the vessels. Having these systems has helped to reduce turnaround times and improve overall efficiency. Additionally, we do not use drones on our daily basis, but the use of drones for inspecting vessels and port infrastructure has proven useful in identifying potential maintenance issues before they become critical.

-What global challenges do you see the maritime industry facing today, and how do they impact port operations?

The maritime industry faces several global challenges, including the environmental impact of shipping, the rising demand for more efficient supply chains, and the volatility of international trade. Port operations are directly impacted by these issues, as we have to adapt to stricter environmental regulations, such as reduced emissions from vessels and compliance with new sustainability standards.

-How do you foster collaboration between the various departments and teams you work with?

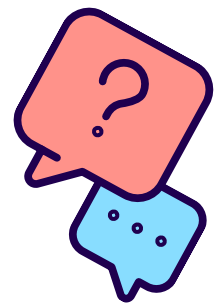
Teamwork is built on communication and is the most important part. I ensure regular briefings and team meetings where every department can communicate their concerns and discuss any challenges. I also encourage a culture of mutual respect and openness. Having clear roles and responsibilities for each department is a big key for the industry, I try to help in any department that I can. With the support of each other during daily basis is key to maintaining smooth and efficient operations.

-What are your short- and long-term goals as a Port Captain, and how do you see the future of port operations evolving in Puerto Rico?

My goal in a short term is to continue cultivating the efficiency and safety our operations by mixing more advanced technologies and improving personal guidance. In the long term, I want to help position Borinken Marine Group in more ports in Puerto Rico as key players in the shipping industry, particularly as we see the increasing demand for container traffic and transporting cargo in open-deck barges, as well as fuel barges. With the new technologies I expect ports to become more demanding and self sustainable, with an emphasis on smart port systems and green technologies. This shift will improve efficiency and also make the entire maritime industry more eco-friendly, with more cargo and vessel movements.

We would like to thank **Francis Vázquez**, for taking the time to share his valuable insights and experiences. His dedication to safety, efficiency, and continuous improvement in port operations plays a crucial role in the maritime industry's success.

As the industry continues to evolve, it's clear that professionals like **Francis** are helping to steer it toward a more innovative and collaborative future. We look forward to seeing how his leadership and expertise continue to shape the growth of Borinken Marine Group and Puerto Rico's maritime sector.



PING-PONG INTERVIEW

Discover more about Francis Vázquez

-Favorite color
Blue

-Favorite food
Pizza & steaks

-A movie you love

-Best thing in life
Family

-Worst thing in life
Sickness

-Hobby or something you love doing
Fishing & cruising boats

-A destination in your bucket list
Costa Rica & Australia

-A song that always lift your mood
Reggae

-Something you can't live without
Family, wife, kid & dogs

-Your dream vacation
Skiing on snow

-Your dream car
RAM TRX

-Favorite book
Maritime articles

-Your biggest wish
Owning my own boat

-Your greatest strength
Confidence

-A weakness you're working on
Healthier lifestyle

MARITIME CURIOSITIES & FACTS *DID YOU KNOW?*

The maritime industry is full of fascinating facts! Here are a few that might surprise you:

- ⚓ Over 90% of global trade is transported by sea.
- ⚓ The first tugboat was built in 1736, and they have been essential to shipping ever since.
- ⚓ A fully loaded cargo ship can take up to 20 miles to stop completely.
- ⚓ The maritime industry employs millions of people worldwide, with growing opportunities for women in the field.
- ⚓ The largest ships can cost over \$200 million to construct.
- ⚓ Worldwide, only about 2% to 10% of containers are inspected.
- ⚓ It's a greener form of transport compared to trucks and planes.
- ⚓ The average costs of shipping a bicycle and a can of soda are \$10 and \$0.01 respectively.
- ⚓ At any given time, there are about 20 million containers making their journey across the seas.
- ⚓ A container ship's engine is 1,000 times more powerful than that of a family car.
- ⚓ The biggest container ships can hold up to 745 million bananas in 15,000 containers (One for every European and North American).
- ⚓ Large container ships can fit up to 11,000 containers of cargo (44 miles).
- ⚓ US east coast ports in New York and New Jersey account for over a third of North Atlantic trade.
- ⚓ There are around 1.5 million sailors employed globally, with Philippines producing the highest number of seafarers
- ⚓ Around two-thirds of ship crews have no communication means in the open sea (Only about 10% have freely-available internet)

Earth Day & Sustainability in Maritime



Navigating a Greener Future

April 22 marks Earth Day, a global reminder of the importance of protecting our planet. The maritime industry plays a crucial role in sustainability, and BMG is committed to adopting environmentally friendly practices. From fuel efficiency strategies to waste reduction initiatives, we continue to explore ways to reduce our environmental footprint.

*Let's work together
toward a cleaner,
greener future!*

MARITIME WORD SCRAMBLE CHALLENGE

Think you know your maritime terms? Put your skills to the test! Unscramble the words below and prove you're a true seafarer. Need a hint? 💡

PISH

💡 *They brave the wave and carry the cargo*

SNAECO

💡 *Vast and mysterious, they connect the world*

AINVTANOI

💡 *It's essential for every captain to stay on course!*

LASRSO

💡 *Guardian of the seas, guiding vessels to their destination.*

GPIPNSH

💡 *The heartbeat of global trade and transportation.*

RINESMRA

💡 *Experienced sailors who know the seas by heart.*

YVEOGA

💡 *An adventurous journey across the seas.*